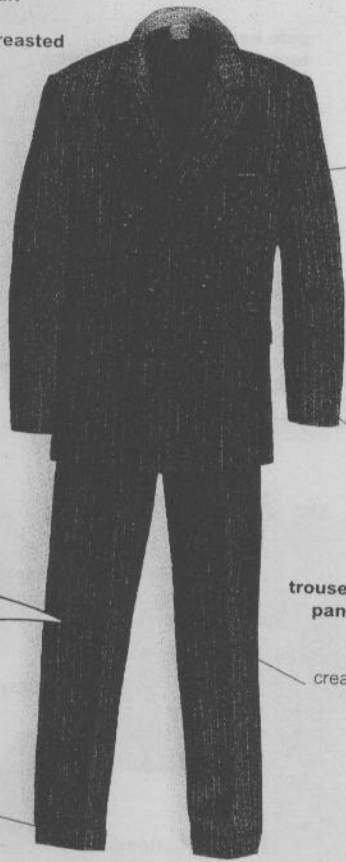


pinstripe suit

double-breasted jacket



breast pocket

cuff



pinstripe

turn-up (BrE) / cuff (AmE)

single-breasted jacket



lapel

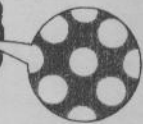
tweed

waistcoat (BrE) / vest (AmE)

lining



bow tie



polka dots

trousers (BrE) / pants (AmE)

crease



cravat



paisley

patterned/print blouse

sleeve

cuff



collar

crop top



leggings

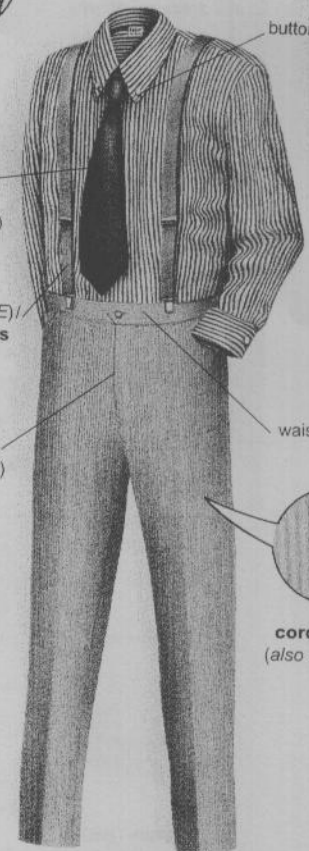


tie (esp BrE) / necktie (AmE fml)

braces (BrE) / suspenders (AmE)

fly (BrE also flies)

striped shirt



button-down collar

waistband



corduroy (also cord)

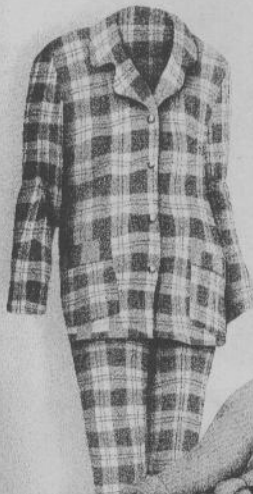
jeans (made of denim)



flared trousers (BrE) / pants (AmE) (also flares)

trousers (BrE) / pants (AmE)

check pyjamas (BrE)  
checked pajamas (AmE)



nightdress (BrE)  
nightgown (AmE)



lace

polo neck (BrE)  
turtleneck (AmE)



sweater  
(BrE also jumper)

V-neck



cardigan

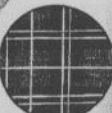
sweatshirt

round neck



bathrobe (BrE)  
also dressing gown

kilt



tartan/  
plaid

towelling (BrE)  
toweling (AmE)



tracksuit bottoms (BrE)  
sweatpants (AmE)

tracksuit (BrE)/sweats (AmE)



coats

hood



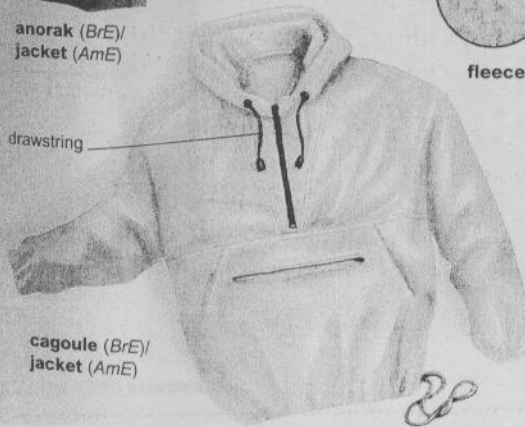
anorak (BrE)  
jacket (AmE)

fleece



fleece

drawstring

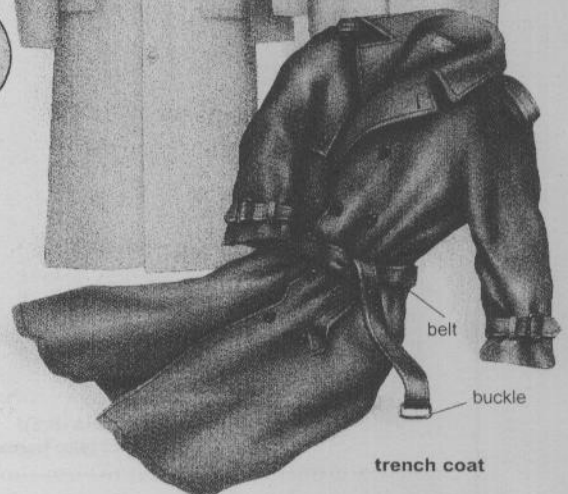


cagoule (BrE)  
jacket (AmE)

jacket

overcoat

raincoat



belt

buckle

trench coat